

BI-WEEKLY

NEWSLETTER

WWW.RSI-KK.COM

info@rsi-kk.com

(Tel.) 03-6672-6330 (Fax) 03-6388-9283

AZ Omori Building 5th Floor 6-19-8 Minami Ooi,
Shinagawa-ku, Tokyo 140-0013 (Japan)

RSI

Monday, April 22, 2024

Global News, financial analyses, data center related laws & regulations and further latest updates about technologies transforming the data center industry.

NEWSLETTER N* NEN12024042003



1-GWh Battery now Operational for Solar Site Powering Google Data Center in Arizona

Google recently signed a renewable energy agreement in Mesa, Arizona, aiming to power its operations with more than 430MW of new-to-the-grid, carbon-free energy capacity. This energy mix includes dedicated wind power, solar energy, and battery storage from three facilities operated by NextEra Energy Resources on Salt River Project's (SRP) power grid. Notable components of this agreement include the Sonoran Solar Energy Center, a 260MW solar facility with a 1 gigawatt-hour (GWh) battery energy storage system, and the Babbitt Ranch Energy Center, a 161MW wind project. Google's Mesa data center, expected to be operational in 2025, will benefit from this renewable energy supply, contributing to a more sustainable energy future for the region..

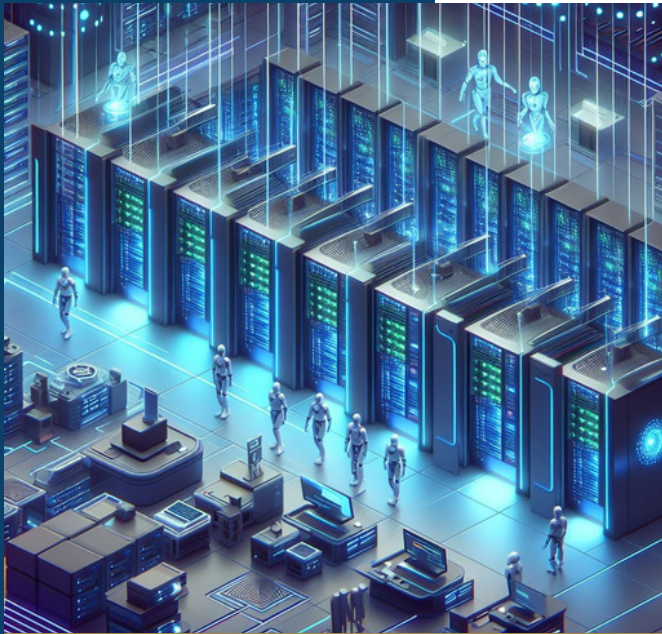
Source : [World-Energy](#), March 15th, 2024

General Assembly adopts landmark resolution on AI

The United Nations General Assembly, supported by over 120 member states, has passed a resolution for "safe, secure, and trustworthy" AI. Emphasizing human rights in AI's lifecycle, it also recognizes AI's role in the 17 Sustainable Development Goals. It urges all member states and stakeholders to establish and endorse regulatory and governance frameworks for AI safety. Furthermore, it advocates for support to developing nations to leverage the advantages of digital transformation and secure AI systems. This resolution marks a crucial stride towards global AI safety.

Source : [United Nations News](#), March 21st, 2024

01/05



Schneider Electric Collaborates with NVIDIA on Designs for AI Data Centres

Schneider Electric and NVIDIA are collaborating to enhance data center infrastructure for edge AI and digital twin technologies. They will introduce AI data center reference designs, focusing on NVIDIA accelerated computing clusters for various AI workloads. Special attention will be given to high-power distribution and liquid-cooling systems. The aim is to seamlessly integrate AI solutions into data center infrastructure, optimizing performance and reliability.

These reference designs will provide a framework for implementing NVIDIA's accelerated computing platform while optimizing performance and sustainability, benefiting partners, engineers, and data center leaders.

Source : [Schneider Electric](#), March 19, 2024

“Sand battery” or a sand-based Energy storage medium

As a part of the net zero goal set the governments, various organizations, and industries the world is moving towards the renewable energy production sources. The nature of these type resources is that they fluctuate a lot and the energy which can be produced at the peak is needed to be stored for when the source of production is at its lowest.

Sand (and sand-like materials) is one of the resources that can store the energy in the form of heat and later can provide it to warm the homes, help the steam-based industries and other industries which relies on fossil fuels.

Source : [Polar Night Energy](#), July 5th, 2022

Honeywell's Innovative Technology to Enable Hydrogen Transportation

Hydrogen as one of the fuels for the future energy sources requires meticulous methods for its transportation. Recently Honeywell (energy and sustainability solution provider organization) has announced a collaboration with ENEOS (Japanese energy company) in order to commercialize the Liquid Organic Hydrogen Carrier (LOHC). In this method the hydrogen will be transformed chemically into methylcyclohexane (MCH) and change back to hydrogen after being transported to Japan.

Source : [Honeywell](#), February 13th, 2024

TSMC's First Japan Plant to Hit 60% Local Procurement by 2030

Taiwan Semiconductor Manufacturing Co. (TSMC) has informed Japan's Prime Minister, Fumio Kishida, that their first chip plant in Japan aims to achieve 60% local procurement by 2030. TSMC's Chief Executive Officer, C.C. Wei, conveyed this target during a meeting with Kishida while the official visited the company's plant in Kumamoto. The goal pertains to indirect materials used in the manufacturing process but not included in the final products, and it does not encompass machinery.

Japanese officials hope that TSMC's presence will enhance local suppliers'

technology and business. Tokyo has already allocated ¥476 billion (\$3.1 billion) for TSMC's first factory, which was established through a joint venture involving the Taiwanese chipmaker and local companies, including Sony Group Corp. Additionally, Japan's government has pledged an additional ¥732 billion in subsidies for TSMC to build a second fab. TSMC plans to commence shipping logic chips for camera sensors and automobiles from the first facility in Kumamoto by the end of this year.

Source : [Bloomberg](#), April 4th, 2024

DDN AI400X2 Turbo Appliance Accelerates Gen AI and Inference for Data Center and Cloud by 10 x

DDN has introduced the latest addition to its A3I[®] solutions, the AI400X2 Turbo, at GTC, DDN Booth #816. 30% more powerful than its predecessor, the AI400X2, this solution offers faster performance and expanded connectivity options.

With AI workloads increasing, GPU manufacturers are innovating faster accelerators, requiring data center infrastructure to keep pace. The AI400X2 Turbo boasts speeds of 120 GB/s write and 75 GB/s read per 2U appliance, enhancing ROI for multi-node GPU clusters and various AI applications like Generative AI and Inference.

Source : [DataDirect Networks](#), March 18, 2024

DigitalBridge joins race to buy AirTrunk - report

DigitalBridge, an American asset management firm specializing in digital infrastructure and AI, is reportedly in the running to buy a share in AirTrunk. This Australian company operates large-scale data centers throughout the Asia Pacific.

The current stakeholders, Macquarie Group and Canada's Public Sector Pension Investment Board, are considering selling a portion or all of their shares. Other interested parties include KKR, Brookfield, and GIP, with Blackstone being the most likely buyer.

The sale could value AirTrunk between AU\$12 billion and AU\$15 billion (\$7.9 billion to \$9.9 billion), with half of the company potentially changing hands.

Source : [datacenterdynamics](#), March 21, 2024



RSI DC Operations Support

Highly experienced bilingual staffs available to ensure optimum system performances

RSI is proud to introduce their bilingual Data Center Operations (DC Ops) Support staffs to support you in your daily operations and take immediate necessary actions to address frequent or infrequent issues happening in your data center. Because RSI is aware of how

valuable are your DC facilities, they can be provided with an experienced and bilingual staff to proactively help you maintain reliability and uptime in your data center facilities during daytime or nighttime, whether on weekends or public holidays.

On-site Data Center Operations

RSI can provide 24/7 on site staffs to efficiently support all aspects of your data center's critical physical infrastructure to ensure high availability and performance.

RSI can guarantee that all work performed by its experienced technicians is completed to high quality, while maintaining service level agreements, and without any impact neither on your business nor on your clients.

RSI DC operations staffs can deploy their know-how and best practices to efficiently handle your entire data center facilities, including all servers, storage, networking, power and cooling equipment, in order to ensure you a continuous access and an optimum availability.

What RSI's Customers Say

Through a long term relationship, RSI has dispatched staffs to provide on-site support to various clients across Japan including global and major domestic companies. Most of RSI clients include DC providers, DC services providers and diverse financial institutions.

RSI is proud of the trust built through the excellent quality of its customer relationships in addition to its high quality work that its clients have consistently testified.

For further scope of services provided by RSI, please reach out to us with your inquiry at the contact information depicted below.

+81 3-6672-6330



5F AZ Omori Building 6-19-8, Minami Ooi,
Shinagawa-ku, Tokyo 140-0013
www.rsi-kk.com / info@rsi-kk.com

Disclaimers

Disclaimer

This newsletter is made available for informational purpose only to ensure that you are kept up to date with the latest developments, insights and trends about major data center and information technology likely to transform these industries. The newsletter covers topics specifically related to latest and future technology developments; financial reports & analyses and business mergers & acquisitions involving major global companies; laws and regulations in north American, European Union and Asia Pacific.

By using this newsletter, you understand that there is no legal relationship between you and the newsletter or our company. The newsletter should not be used as a substitute of competent legal advice or a licensed professional in your state or your country.

This newsletter may contain offers about our products & services or our partner's. However, we will not sell, lend or make your email available to any third parties. You will not receive emails from our partners directly as a result of the use of this newsletter. We will keep your email address on our database for as long as we run the newsletter service or until such a time that you unsubscribe. To unsubscribe to this newsletter, please drop us an email using the link available at the contact information below.

05/05

RSI

+81 3-6672-6330
5F AZ Omori Building 6-19-8, Minami Ooi,
Shinagawa-ku, Tokyo 140-0013
www.rsi-kk.com / info@rsi-kk.com